



WORLD LEADER IN FLEXIBLE SPACE MANAGEMENT

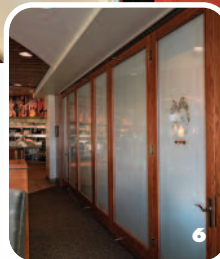
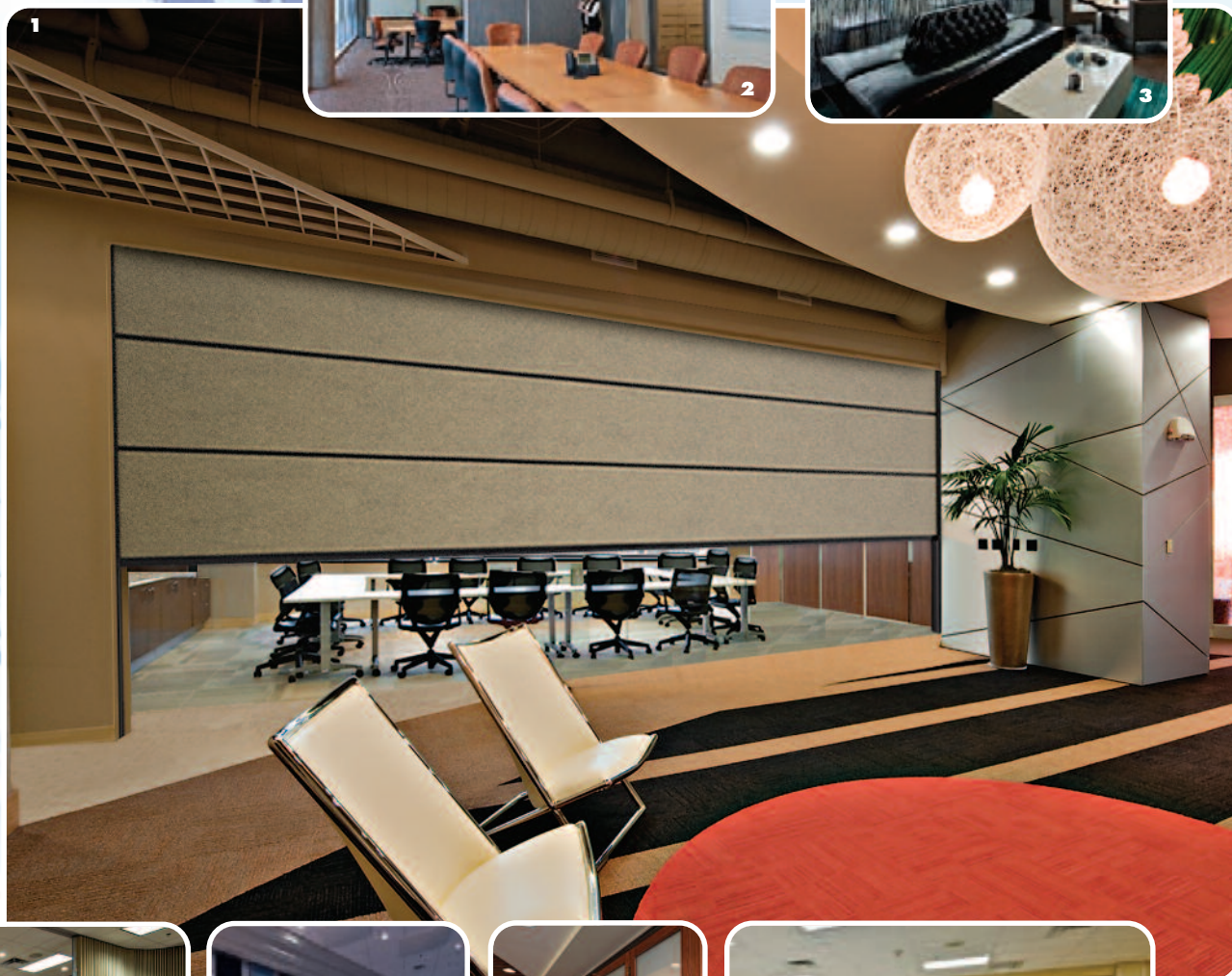
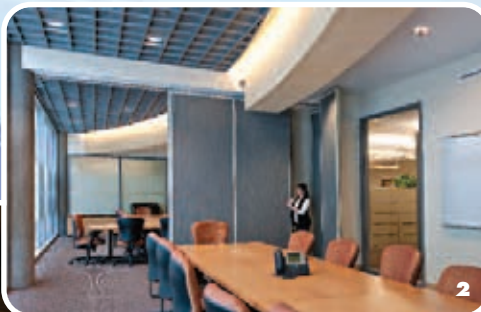


PARTITIONS

OPERABLE | VERTICAL LIFT | GLASSWALL | ACCORDION



YOU NEED INNOVATIVE WAYS TO PUT YOUR BUILDING'S SPACE TO WORK.



FOR MORE INFORMATION VISIT www.hufcor.com

Choose Hufcor...

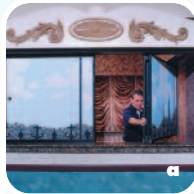
AND CHOOSE PARTITIONS THAT ARE KNOWN
WORLDWIDE FOR QUALITY AND VALUE.

a This busy banquet facility uses short partitions to close off the bar when it is not needed. The vinyl faces were hand painted to match the permanent walls.

b Beautiful wood wainscot and chair rails were added to the panels to match the perimeter walls.

c Dividing auditoriums and meeting rooms with stairs is not a problem for Hufcor. Our bottom seals are modified to seal perfectly against each step.

d Timber-framed panels were customized with a wainscot in this California restaurant.



Customized Products. Although we have the most comprehensive selection of operable, glasswall and accordion partitions, occasionally our "standard" products won't meet your needs. Our talented engineers can design custom partitions for a specific application.

Quality Assurance. Hufcor is the first U.S. manufacturer of operable walls and accordion partitions to achieve ISO 9001 registration. Regular check-ups by our registration authority make certain we adhere to the ISO guidelines and requirements.

Partitions must control sound. We test our products in our sound laboratory to make certain they meet or exceed our published acoustical ratings. The laboratory is certified by the National Voluntary Laboratory Accreditation Program (NVLAP) and, like our ISO certification, we undergo regular inspection to make certain we adhere to their strict regulations. And, although it isn't required of us, we also hire an independent consultant to witness and verify any test results.

Worldwide Availability. Hufcor's U.S. manufacturing facilities are located at our headquarters in Janesville, Wisconsin. In addition, Hufcor products are manufactured in Australia, Brazil, Canada, China, Finland, France, Germany, Japan, Malaysia, Mexico, Russia, South Africa, Spain, and the United Arab Emirates. Hufcor products may be purchased through a network of authorized Distributors located throughout the world. Check our website or call for the name of your nearest representative.

Renovation and Repair. Not only do we provide new products, we also offer retrofit service for Hufcor products and those manufactured by others. Contact your local Hufcor representative for a free analysis of your needs.

Leasing Program. You may wish to consider the option of buying partitions through a lease program. Check with your accountant to see if leasing vs. a lump sum payment will provide you with financial benefits.

Hufcor Custom Delivery. (Available in the U.S. mainland). If you need to pinpoint the delivery date and time (which is often critical for renovation projects), we can do it. Our fleet of vans delivers your order on time and without damage that can occur when shipping by other methods.

(opposite page)

1 Summit® vertical lift partitions store above the ceiling. They are electrically operated and move easily into position with the press of a button (simulated installation).

2 Paired panels create sound separation and are quickly set in place whenever multiple meeting space is needed.

3 This hotel's rooftop bar offers a breathtaking view of the Chicago skyline. Frameless glasswall panels with custom acrylic faces divide the space for private functions.

4 Accordion doors enable the Brunswick Lanes to create private dining areas in their banquet facility.

5 Customized bottom seals enable these panels to seal against the steps when this University auditorium requires simultaneous sessions.

6 Chicago's Ditka's Restaurant uses timber-framed panels with full satiny translucent glass to create private dining rooms.

7 This school uses operable partitions with inset windows to let the daylight in from nearby windows. A side benefit is that the staff can observe classroom activities.



MORE ABOUT HUF COR...

U.S. Owned and Operated with Worldwide Distribution Hufcor is the world's leading manufacturer of operable partitions. Products are manufactured in Janesville, WI USA and available from local distributors throughout the country. Outside the U.S. products are manufactured in 14 countries and may be purchased through a network of authorized distributors worldwide. Visit www.hufcor.com/FindYourDistributor for the Hufcor representative serving your area.

Warranty Most Hufcor products are guaranteed against defects in materials and workmanship for two years. Our warranty covers all parts and their installation. Compare this warranty with others whose warranty covers only some parts.

ISO Registration Hufcor U.S. quality system is registered to the ISO 9001 standards.

Suspension Systems Hufcor track systems have been life-cycle tested for approximately 10 years of use.

Acoustics Acoustically rated partitions have been tested in accordance with ASTM E90, unlike some manufacturers that only test a single element and not a complete system.

Decorative Finishes We offer a wide array of factory-applied standard vinyl patterns and colors that are included in the price of our operable and accordion partitions. However, optional carpet, fabric, wood veneer, high pressure laminate and other custom finishes or trim colors are available on many models. Panels may also be unfinished for field decoration.

Custom Designs Most products may be modified for specific design requirements. Examples include: notched panels to fit around soffits, special sized panels to seal against sloped or stair-stepped floors, and window inserts.

Continuing Education We offer the following Continuing Education Programs which qualify for AIA Learning Units. Contact your local Hufcor Distributor to schedule a presentation.

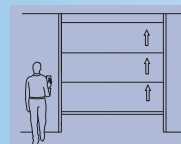
- *How to Optimize the Acoustical Performance of Rooms with Operable Partitions* (1 HSW credit)
- *An Introduction to Glasswall Partitions* (1 HSW credit)
- **NEW!** *Operable Partitions for a Sustainable World* (1 LU; 1 HSW; 1 SD credit)

Product Guide

SUPPORT	STACK	CONFIG. ¹	UNIQUE FEATURE ²
Overhead	Center	Pairs	Steel frame
			Steel frame
			Steel frame/face/Fire Rated
			Glass Panels - Frameless
			Glass Panels - Timber-framed
			Glass Panels - Acoustically
	Side	Single (also referred to as Omni or Individual Panels)	Steel frame
			Steel frame
			Steel frame/face/Fire Rated
			Steel frame/4" btm seal
			Steel frame/4" btm seal/Fire
			Glass Panels - Frameless
			Glass Panels - Timber-framed
			Glass Panels - Acoustically
	Center	Continuously Hinged (train)	Steel frame
	Center	Accordion	Steel frame
			Steel frame
NEW!	Vertical Lift	Vertical Single Panels	Replaceable Covers
		Vertical Pair (Bi-Fold)	Steel frame
Floor Support	Center & Side	Unispan Support for Pairs & Single Operable Panels & Accordion	Single panels store above the ceiling
			Paired panels lift up and fold out
Floor Support	Center & Side	Unispan Support for Pairs & Single Operable Panels & Accordion	Track and partition system. Used with operables and accordions

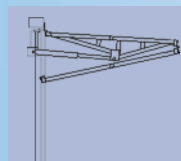
Partition Types

OPERABLE PARTITIONS – (also described as Hufcor brand Airwalls, movable walls, flat panels) are a series of panels suspended from tracks. When in place, the panels are similar in appearance to a permanent wall. Rated for sound separation, Hufcor operables are available in paired, individual (omni-directional), continuously hinged, and vertical lift configurations. Glass operable partitions are available in paired and individual configurations.



Summir® Vertical Lift Partition:

Individual panels move vertically and are stored above the ceiling. Electric switch operation moves the panels quietly and safely into position along vertical guide rails.



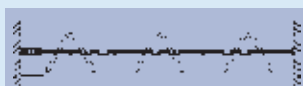
Bi-Fold Vertical Lift Doors:

Primarily for exterior use, the BF2 Hydrau-lift bi-fold door folds vertically up and out. It comes standard with a red oxide primed steel frame and may be clad with a variety of materials.

Hufcor offers an extensive selection of products. The Product Guide below lists standard product features; however, many products can be modified for special job site requirements.

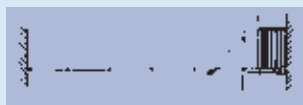
	SERIES	TOP SEALS		FLOOR SEALS ²			VERT. TRIM	MAX. ² HEIGHTS	MAX. WIDTH ² FOR SINGLE OPENING	STC ACOUS. RATINGS
		FIXED	RETRACT	RETRACT	FIXED	AUTO				
	632	std	opt	std	opt	opt	std/opt	24'3" [7.3m]	Unlimited	41-51
	642	opt	std	std	opt	n/a	std/opt	24'3" [7.3m]	Unlimited	43-54
	642F	n/a	std	std	n/a	n/a	n/a	24'3" [7.3m]	Unlimited	51, 54
	GL2	std	n/a	n/a	std	n/a	opt	10'5" [3.2m]	Unlimited	n/a
	GT2	std	n/a	n/a	std	n/a	n/a	10'2" [3.1m]	Unlimited	n/a
Rated	GA2	std	n/a	opt	std	n/a	std	12'2" [3.7m]	Unlimited	44
	631	std	opt	std	opt	opt	std/opt	24'3" [7.3m]	Unlimited	41-51
	641	opt	std	std	opt	n/a	std/opt	40'5" [12.3m]	Unlimited	43-54
	641F	n/a	std	std	n/a	n/a	n/a	40'2" [12.2m]	Unlimited	51, 54
	641	opt	std	std	n/a	n/a	std/opt	40'5" [12.3m]	Unlimited	43-54
Rated	641F	n/a	std	std	n/a	n/a	n/a	40'2" [12.2m]	Unlimited	51, 54
	GL1	std	n/a	n/a	std	n/a	opt	10'5" [3.2m]	Unlimited	n/a
	GT1	std	n/a	n/a	std	n/a	n/a	10'2" [3.1m]	Unlimited	n/a
Rated	GA1	std	n/a	opt	std	n/a	std	12'2" [3.7m]	Unlimited	44
	633E	std	n/a	std	opt	n/a	std/opt	28'3" [8.6m]	157'4" [47.9m]	41-51
	643E	std	n/a	std	opt	n/a	std/opt	30'3" [9.2m]	119'11-5/8" [36.7m]	43-54
	633	std	n/a	n/a	std	n/a	std/opt	12'3" [3.7m]	40'11-1/8" [12.4m]	41-51
	1500-4500, manual, opt elec	std	n/a	n/a	std	n/a	n/a	17'0" [5.2m]	40' [12.1m]	15-45
	640V	n/a	n/a	std	n/a	n/a	n/a	17'0" [5.2m]	40' [12.1m]	min. 51
	BF2	n/a	n/a	n/a	n/a	n/a	n/a	16'0" [4.9]	18'0" [5.5]	n/a
	U900	n/a	n/a	n/a	n/a	n/a	n/a	Determined by weight of panel	39'9" [12.1m]	n/a

¹ See "Partition Types" for additional information regarding configuration. ² Information shown is "standard." However, many products and features may be altered to meet specific job site requirements. Contact your Hufcor representative for assistance. n/a = not available or not applicable. **Note:** Metric dimensions are in []



Paired Panels:

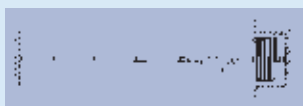
For wall-to-wall division. Panels are hinged in pairs and are manually operated. Completely close the opening or place panels along the track for use as display panels or sight dividers. Recommended for: classrooms, meeting rooms and training centers.



Individual Panels:

(Omni-directional) Individual, single, manually-operated panels offer maximum room

flexibility. The track system enables panels to be set at angles and alternate locations. Curves and self-storing systems are available. Recommended for: religious facilities, school multi-use areas, hotel ballrooms and convention centers.



Continuously Hinged:

(Train) panels are hinged together and move from wall to wall in a straight line.

Electrically operated for fast, easy set-up. Recommended for school gymnasiums and hotel ballrooms. Manual operation available for small openings.



UNISPAN® – Unispan is a self-support system that allows the use of operable and accordion partitions in areas with inadequate overhead structure to suspend partitions. Bracing is needed for lateral support only.



ACCORDION PARTITIONS –

(or doors) provide fast space division. Simply pull across the opening and latch. Add switches, curves and posts to move partitions to store in alternate locations or to intersect with other partitions. Available as single doors or pairs. Recommended for classrooms, meeting rooms and religious buildings – wherever you need easy, fast space division.

NEW Summit®

VERTICAL LIFT OPERABLE PARTITIONS

Flexibility has a whole new direction...up.

Hufcor, the world's most installed brand of operable partitions, introduces the Summit 640V vertical lift operable wall system. Summit's patent-pending lift system takes acoustic operable panels and stacks them neatly above the ceiling. The unique, automated lifting device makes operation as simple as pushing a button to provide optimal space division.

FEATURES & BENEFITS

- **RETRACTS VERTICALLY ABOVE THE CEILING**

Benefit: Floor space is not needed to store the partition when it is not in the opening.

- **INTERLOCKING SEALS**

Benefit: Maintains acoustics over time, ensures panel-to-panel alignment, and adds stability to the partition when extended.

- **CONTACT SENSOR SEAL**

Benefit: Safety—Stops the downward movement and reverses the partition if it should encounter a person or object.

- **VERTICAL GUIDE RAILS**

Benefit: Reduces moveable parts and the need for separate motors to seal panel into opening.
Benefit: Easy access to operating guide rollers and safety limit switches for inspection and repair adjustments.

- **SAFETY SYSTEMS**

Benefit: Primary and secondary safety systems in the event a single safety system would fail.

- **MANUAL OVERRIDE OF MOTOR UNITS**

Benefit: Panels can be lowered if there is a power failure.

- **ELECTRONIC, AUTOMATIC OPERATION**

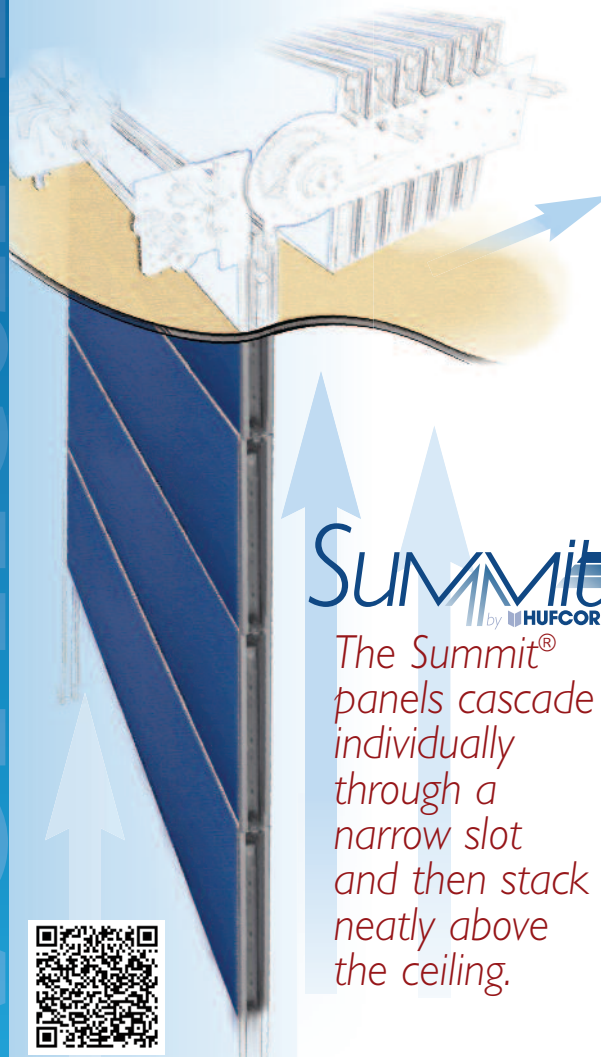
Benefit: Automated operation – reduces setup and operational training time.

- **DURABLE WELDED STEEL FRAMES**

Benefit: Proven durability in tens of thousands of Hufcor installations globally.

- **SINGLE PANEL CONSTRUCTION**

Benefit: Fewer moveable parts and aesthetically more appealing, creating a "wow" factor.



Summit
by **HUFCOR**

The Summit® panels cascade individually through a narrow slot and then stack neatly above the ceiling.

SUMMIT® OPERABLE PARTITION SPECIFICATIONS

(Refer to the Product Guide chart on pages 4-5 for individual product features, options, standard sizes)

Panel Construction

Panels are a nominal 4" [102] thick and to 30" [762] in height. Panel faces shall be steel laminated to appropriate substrate to meet the STC requirement. Welded steel frames are of minimum 16 gauge [1.42mm] painted steel.

Seals

Sound seals shall be of tongue and groove configuration, ensure panel-to-panel alignment and prevent sound leaks between panels.

Horizontal panel edges shall provide a minimum groove appearance.

The first panel in the opening shall have a bottom retractable safety sensor seal providing a minimum of 2" [51] floor adjustability to accommodate out-of-level floors.

Finishes

The standard face finish is factory-applied vinyl; however, optional carpet, fabric, and other custom finishes are available, subject to factory approval for manufacturing compatibility.

Exposed metal trim is powder coated in Lamb's Wool, Gray, Brown, or clear anodized aluminum. The matching vinyl seals are available in Lamb's Wool, Gray, or Brown. Custom metal trim colors are available for an upcharge.

IMPORTANT NOTE ABOUT FACE FINISH DIRECTION: Finishes will be applied to the 640V IN A HORIZONTAL DIRECTION. The finishes provided on most selectors or samples are shown in a vertical position and may look different when applied horizontally.

Motor and Drive System

Panels are retracted above the ceiling and stored by activating the two key-switch controls. The motor and drive system shall automatically extend/retract the panels in the opening.

Each panel shall be supported by two guide rollers traveling in vertical guide rails.

Power unit shall be UL listed and include motor, torque limiter and brake, two key control stations wired in series, emergency release, and all necessary equipment for electric operation. Motor shall have adequate horsepower to operate partition effectively. Partition shall be operated by two (2) control stations wired in series and located on opposite sides and ends of the partition. The key stations require human contact to be activated ensuring safe, supervised operation of the partition system.

The Hufcor support system shall have been life-cycle tested for up to 100 miles [161 meters].

Safety Systems

When the operable wall is being lowered (closed), the panels shall stop and reverse if the leading (bottom) edge comes into contact with any object between it and the floor. The operation of the wall may resume once the key switch has been released and the obstruction cleared.

Acoustics

The partition has been tested at a laboratory accredited by the National Voluntary Laboratory Accreditation Program (NVLAP) and in accordance with ASTM E90 Test Standards. Standard panel construction shall have obtained a minimum STC rating of 51.

Weight

Weight of the panels shall be 10.9 lbs. per sq. ft. [53.2 kg/sq m].

ISO Registration

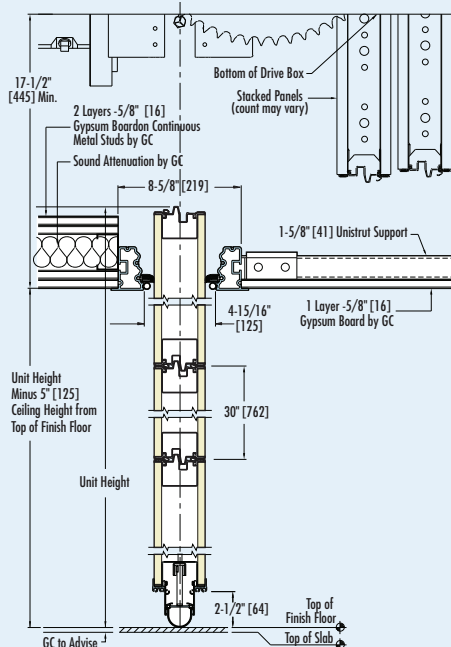
Hufcor U.S. manufacturing facilities' quality systems are registered to the ISO 9001 standards.

Warranty

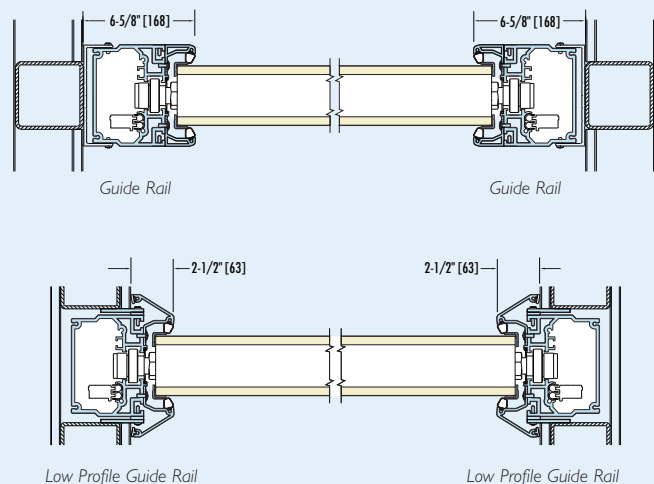
Summit Series 640V partitions are guaranteed for two years against defects in material and workmanship, excluding abuse.

Details and editable specifications can be downloaded from Hufcor's website, www.hufcor.com. Complete specifications and details may also be found in our Architectural Product Manual.

640V SERIES VERTICAL SECTION



640V HORIZONTAL SECTIONS



BIM MODEL NOW AVAILABLE FOR THE 640V SUMMIT.
CONTACT YOUR LOCAL HUF COR DISTRIBUTOR FOR ASSISTANCE.

Note: Metric dimensions are in []



THE NEXT GENERATION OF FLEXIBILITY

Operable PARTITIONS

SERIES 600 FEATURES

FOUR-FINGER, MULTIPLE
CONTACT SWEEP SEALS

"QUICK-SET" TOP AND
BOTTOM MECHANICAL SEALS

STANDARD 1" TOP AND 2"
BOTTOM CLEARANCES
(DEEPER BOTTOM
CLEARANCES OPTIONAL
ON SINGLE 4" THICK PANELS)

WELDED, HEAVY-DUTY
16-GAUGE STEEL FRAME

PROTECTIVE VERTICAL
EDGE TRIM OR OPTIONAL
MONOLITHIC EDGES

GYPSUM AND STEEL
ACOUSTICAL FACES WITH
TACKABLE SURFACE OPTIONS

STANDARD VINYL, OPTIONAL
FABRIC, CARPET AND CUSTOM
FINISHES MAY ALSO BE APPLIED

WAIST-HIGH SEAL ACTIVATOR
FOR FAST, EASY SETUP

DEEP NESTING,
VERTICAL BULLNOSE/
ASTRAGAL SYSTEM



top to bottom:

Operable walls enable this upscale hotel to hold simultaneous functions. The horizontal trim matches other design elements in the space.

The single panels and track system in the Denver Hall of Fame sports museum provides flexibility for changing displays and redirecting foot traffic.

Wood veneer was added to the Hufcor partition to add elegance and beauty to this board room.

Used to divide this auditorium for simultaneous meetings, the panel faces and trim are finished to match the permanent walls. The bottom seals are customized to navigate the sloped floor.

Operable Partitions

SERIES 600

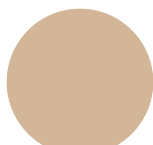
Operable Partitions, also referred to as “airwalls” or flat panels, deliver unlimited space division and acoustical separation. Choose from paired or continuously hinged models for wall-to-wall space separation or single panels for optimum room flexibility. As the world’s leading manufacturer of partitions, we have models for every budget and need. For facilities with special requirements, our engineering department can make recommendations or custom design partitions.

The Hufcor 600 Series operable partition is the most versatile and aesthetically pleasing operable wall constructed today. It combines the durability of a welded steel frame with the design versatility of various acoustical and decorative face constructions.

The panel design enables the 600 series to be manufactured with Hufcor’s quick-set mechanical top and bottom seals that provide the most reliable and fastest in-field operation. Hufcor’s time-tested protective edge trim is standard on both the 3" and 4" thick models yet both can be supplied with a monolithic, untrimmed edge. The deep nesting, interlocking bullnose/astragal and integrated seals provide a reliable vertical seal that keeps out sound.

Trim Colors – Standard

The 600 Series is available in three standard trim colors – Lamb’s Wool, Brown or Gray. Custom colors for metal trim are also available for an upcharge.



Lamb’s Wool



Brown



Gray

Pass Door Features

Hufcor’s pass door has been designed to provide optimal in-field performance. Features include:

- Rigid steel truss frame for durability
- ADA compliant push-pull door hardware
- Protective edge trim for durability and visual requirements identified by International Building Code
- Perimeter compression seals
- No exposed fasteners on inside of door frame
- Positive latching door hardware
- Edge activated bottom seals with downward seal force to stabilize door in opening
- Door leaf compensates for floor variances with a field adjustable mechanical bottom seal

Model Number Chart

When specifying the Hufcor 600 series, simply choose performance features – STC rating, seal system, trim color, protective edge trim, pass doors, finishes – as needed on the project. Our model numbers are easy to understand once you know the code (see the code chart below).

MODEL NUMBER CHART

First Digit 6: 600 Series

Second Digit 3 or 4:
3" or 4" thick panels

Third Digit:
1 for single models; 2 for paired models; 3 for continuously hinged (train) models

Fourth Digit:
E for Electric operation;
F for Fire-Rated

1st Digit	2nd Digit	3rd Digit	4th Digit	
Series	Panel Thickness	Configuration	Optional Code for Special Requirements	Model Number
6	3" [76]	Single Panels		631
6	3" [76]	Paired Panels		632
6	3" [76]	Continuously Hinged (Train)	E = Electric Operation	633, 633E
6	4" [101]	Single Panels	F = Fire Rated Model Available	641, 641F
6	4" [101]	Paired Panels	F = Fire Rated Model Available	642, 642F
6	4" [101]	Continuously Hinged (Train)	E = Electric Operation	643E

Note: Metric dimensions are in []

OPERABLE PARTITIONS SPECIFICATIONS

(Refer to the Product Guide chart on the inside front cover for individual product features, options, standard sizes)

Panel Construction

Panels are a nominal 3" [76] or 4" [102] thick. Panel faces are laminated to the appropriate substrate to meet the STC requirement. Welded frames are of 16 gauge [1.42mm] steel with integral factory applied aluminum vertical edge and face protection. (Optional: no protective vertical face trim for a monolithic look.) Vertical sound seals are of tongue and groove configuration to ensure panel-to-panel alignment and prevent sound leaks between panels. Hinges for pairs or continuously hinged models are recessed and project no more than 1/4" [6] from the panel face.

Seals

Paired & Individual: horizontal top seals are retractable, provide 1" [25] nominal operating clearance, and exert upward force when extended. All panels, including pass door panels and lever closure panels have retractable top and bottom seals. 3" models have standard fixed (sweep) dual 4-finger vinyl top seals but retractable top seals are optional.

Horizontal bottom seals are retractable, provide up to 2" [50] nominal operating clearance and exert downward force when extended. 4" [102] bottom clearance is an available option on Model 641. Automatic bottom seals are optional for 3" single and paired models.

Continuously Hinged (Trains): Electric continuously hinged models have fixed top seals and retractable bottom seals. Fixed bottom seals are an option. 633 manual continuously hinged models have top and bottom fixed seals.

Finishes

The standard face finish is factory-applied vinyl; however, optional carpet, fabric, wood veneers and other custom finishes are available on most models. Panels may also be unfinished for field decoration. The metal trim is powder coated and the matching vinyl seals are available in Lamb's Wool, Gray, or Brown. Custom metal trim colors are available. If a custom trim color is selected, the vinyl sound seals will be furnished in Gray, Brown or Lamb's Wool.

Suspension System

Hufcor track systems have been life-cycle tested for up to 100 miles [161] or approximately 10 years of use.

Acoustics

The partition has been tested in accordance with ASTM E90. A complete, unedited written test report is available upon request. See charts for STC ratings.

ISO Registration

Hufcor U.S. manufacturing facilities' quality systems are registered to the ISO 9001 standards.

Fire-Rated 600-F

One-hour fire rated partitions are available in pairs and single panel models and are identified with an "F" following the model number. They are the same basic construction as the Series 600 and may be finished with any standard Hufcor vinyl, fabric, carpet or any vinyl having a UL Label of 15 or less flame spread. Panel faces may be painted or shipped unfinished for field decoration. The local fire marshal must approve any field applied surface material.

The partition closure must be by lever closure panel which terminates in either a wall recess of a minimum 1-3/8" [35] in depth or surface wall jambs not to exceed 1-3/8" [35] protrusion.

Fire-rated panels are listed as a one-hour Special Purpose Fire Door assembly, tested to UL 10B, ASTM E152 or NFPA 252 standards. The listing includes all variations of the panel configuration, tracks, hardware, end conditions, options, finishes and pass doors contained in the project design.

Warranty

Series 600 and 600-F partitions are guaranteed for two years against defects in material and workmanship, excluding abuse.

Details and editable specifications can be downloaded from Hufcor's website, www.hufcor.com. Complete specifications and details may also be found in our Architectural Product Manual.

630 SERIES STC & Hanging Weights

Models	Sound ¹ Transmission Class (STC)	Hanging Weight ² Lbs./Sq.Ft. [Kg./Sq.M]
631/632/633	51	10.2 [49.8]
631/632/633	49	8.9 [43.5]
631/632/633	47	7.8 [38.1]
631/632/633	43	7.3 [35.6]
631/632/633	41	5.7 [27.8]

640 SERIES STC & Hanging Weights

641/642/643	54	10.9 [53.2]
641/642/643	52	9.5 [46.0]
641/642/643	49	8.5 [41.2]
641/642/643	47	8.0 [38.7]
641/642/643	43	7.8 [37.8]

¹ Sound Transmission Class (STC). Not all substrates are available for all STCs.

² Estimated standard panel weight. Weight will vary based on size, substrate and options. Allow approx. 3.6 lbs./lin. ft. [5.3 kg/m] for track. Add 140 lbs. [63 kg] for pass door; add 5 lbs./lin. ft. [7.4 kg/m] of height for Lever Closure Panel. Weights are calculated for a single line of panels only.

Note: Metric dimensions are in []

630 SERIES Stack Sizes

Configuration	Model(s)	Nominal Stack Depth
Paired	632	3-3/4" [95] per panel + 1" [25] (for Type 38 track) 4" [102] per panel + 1" [25] (for Type 40, 11 track) ¹
Individual (Omni)	631	3-3/4" [95] per panel + 1" [25] ¹
Continuously Hinged (Train)	633 (manual) 633E (electric)	4" [102] per panel + 8-1/2" [216]

640 SERIES Stack Sizes

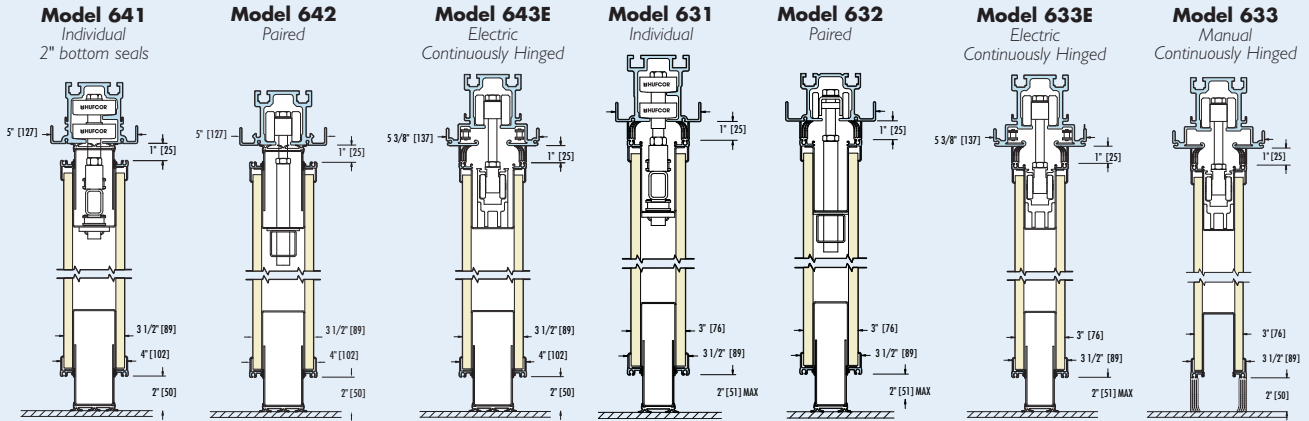
Paired	642/642F	4-1/4" [108] per panel + 1" [25] ^{1, 2}
Individual (Omni)	641/641F	4-1/4" [108] per panel + 1" [25] ^{1, 2}
Continuously Hinged (Train)	643E (electric)	4-1/4" [108] per panel + 8-1/2" [216]

¹ Stack size shown is for retractable bottom seals. Use of optional face material may increase stack dimensions.

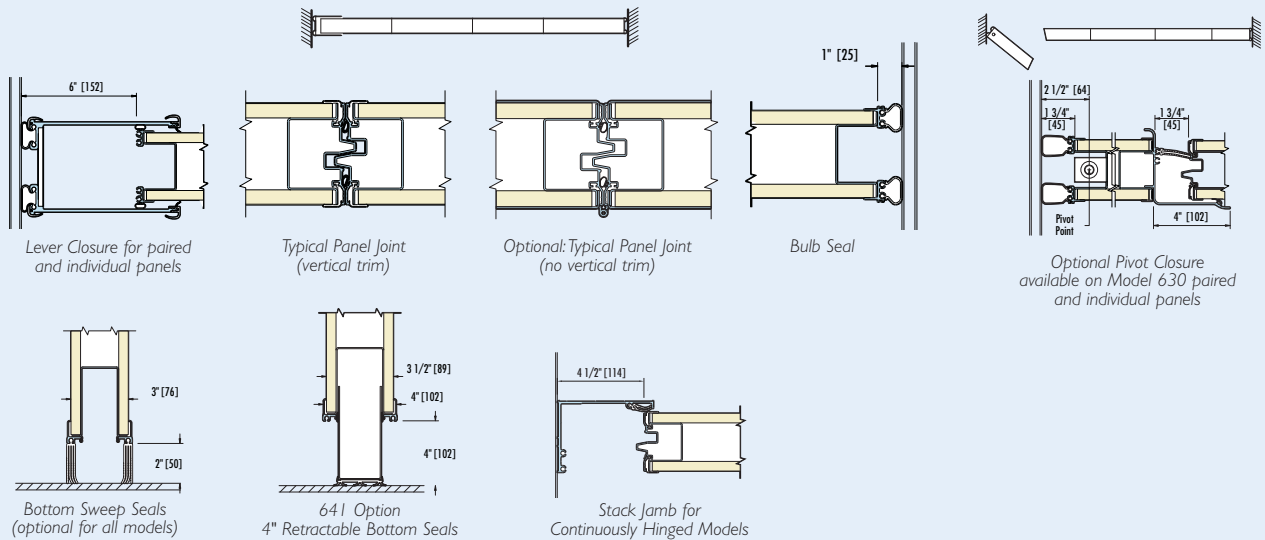
² For fire rated models, add 1-1/2" [38] in lieu of 1" [25].

OPERABLE PARTITIONS SPECIFICATIONS

600 SERIES SECTIONS



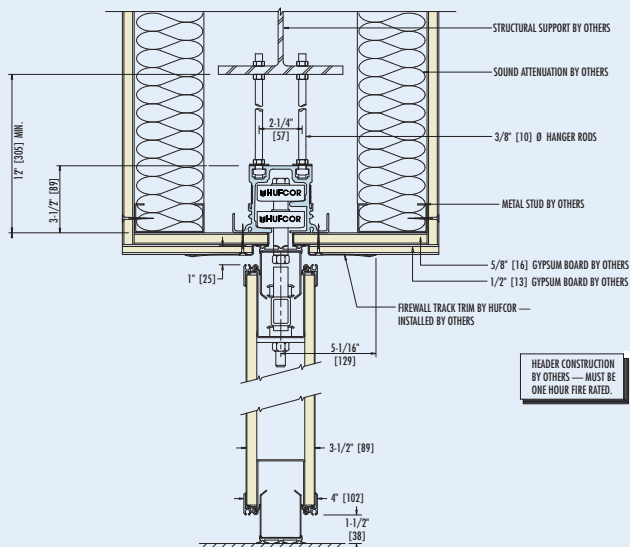
600 HORIZONTAL & OPTIONAL SECTIONS



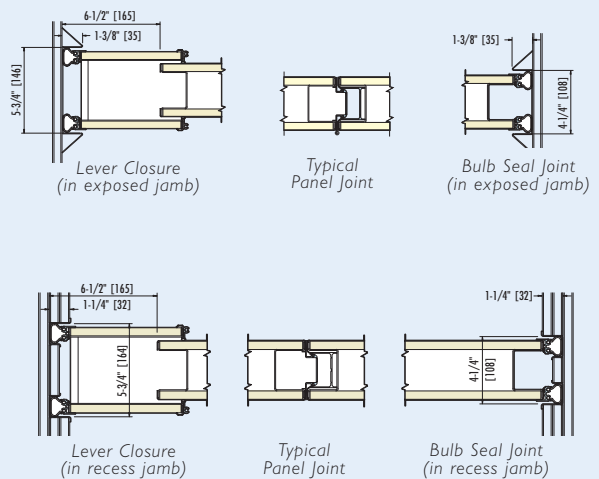
600-F FIREWALL SECTIONS

SERIES 641-F

Shown with Type 36 Track



600-F FIREWALL HORIZONTAL SECTIONS



Note: Metric dimensions are in []

Glasswall PARTITIONS

Our movable glass partitions allow natural light to flood an interior space while providing space flexibility. And, with your choice of clear tempered, full satiny translucent, etched, or custom glass, the glasswalls can become the signature design element of your rooms. Satisfied customers are using glass partitions to close off store fronts, bank lobbies, library training centers, and to create meeting rooms.

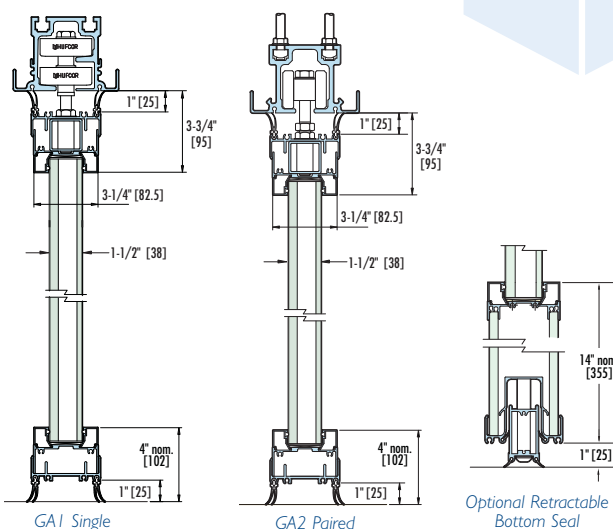


Now available with optional pass doors and mini blinds.

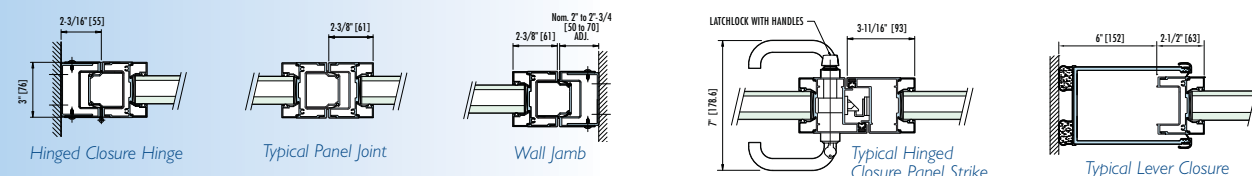
Acoustic GLASSWALL partitions combine acoustic separation and the aesthetic appeal of glass. Panels are of glass surrounded with a nominal 3-1/4" [82.5] thick durable aluminum frame with top and bottom sweep seals. An optional retractable bottom seal with 1" [25] floor clearance exerts downward force to help seal out sound and stabilize the panel. The frame is of clear anodized aluminum. Black or bronze anodizing, Lamb's Wool powder coating, or custom colors are available for an upcharge.

Clearly
Visionary

VERTICAL SECTIONS



HORIZONTAL SECTIONS



GLASSWALL PRODUCT SELECTOR

MODEL	CONFIG.	SERIES #	TOP SEALS FIXED	RETRACT	FLOOR SEALS RETRACT	FIXED	VERT. TRIM	MAX. ¹ HEIGHTS	MAX. OPENING WIDTH	STC ² ACOUS. RATINGS
Frameless	Paired	GL2	std	n/a	n/a	std	opt	10'5" [3.2m]	Unlimited	n/a
Frameless	Single	GL1	std	n/a	n/a	std	opt	10'5" [3.2m]	Unlimited	n/a
Timber-Framed	Paired	GT2	std	n/a	n/a	std	n/a	10'2" [3.1m]	Unlimited	n/a
Timber-Framed	Single	GT1	std	n/a	n/a	std	n/a	10'2" [3.1m]	Unlimited	n/a
Acoustically Rated	Paired	GA2	std	n/a	opt	std	std	12'2" [3.7m]	Unlimited	44
Acoustically Rated	Single	GA1	std	n/a	opt	std	std	12'2" [3.7m]	Unlimited	44

¹ Heights shown are standard. Contact your local Hufcor distributor for custom sizes. ² n/a = not available

Note: Metric dimensions are in []

FOR MORE INFORMATION OR TO CREATE YOUR OWN PRELIMINARY DRAWINGS VISIT www.hufcor.com



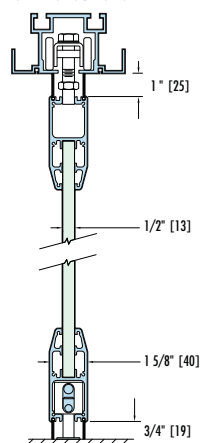
Frameless OPERABLE GLASSWALL

consists of glass panels mechanically fastened to horizontal top and bottom rails. The glass has polished edges and no vertical trim – although vertical trim is an available option. Panels may be ordered as single or paired panels. Single (or omni-directional) panels can be used in alternate locations or stacked in a remote location. Paired panels are a good choice when the partition goes from wall-to-wall. Pivot panels allow access between rooms. Optional in-line pass doors are available on single (omni) models. The standard horizontal rails are of clear anodized aluminum but may be custom finished. Panels are shipped fully assembled.

NOTE: There will be a gap of 1/4"-1/2" between the glass panels when they are in place to prevent glass-to-glass contact. The gap varies due to glass industry tolerances.

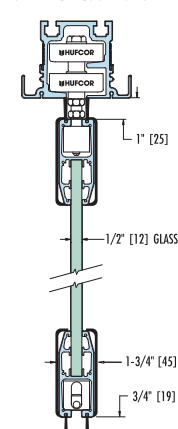
VERTICAL SECTIONS

GL2 Paired Panel



Shown with Standard Horizontal Rail

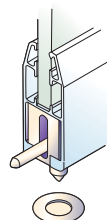
GL1 Individual Panel



Shown with Optional Stainless Steel Clad Rail

FRAMELESS FEATURES

In-Line Pass Door



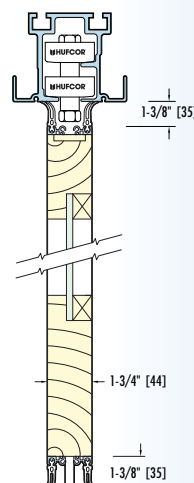
All panels are supplied with concealed foot bolts and interlocking mechanisms. Footbolt engages in floor receptacle to ensure panel-to-panel alignment and stability.



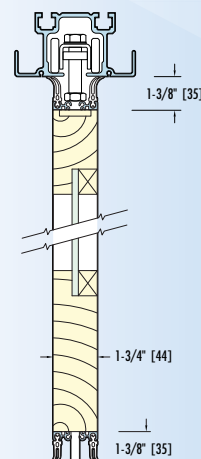
Timber-framed GLASSWALL

consists of glass surrounded with a wood frame. Each wood frame is composed of triple laminated solid wood top and bottom rails and stiles that are constructed from custom made veneers, solid wood edges and an engineered wood core, to ensure a sturdy, durable construction. Choose wood frames made of oak, maple, cherry, or Douglas fir. Frames may also be customized. The wood is stained and finished with a matte coat of polyurethane. The stain color is selected from Hufcor's standard color selector. Panels may be ordered as single or paired panels. Single (or omni-directional) panels may be used in alternate locations or stacked in a remote location. Paired panels are a good choice when the partition goes from wall-to-wall. Pivot panels allow access between rooms. Optional in-line pass doors are available on single (omni) models. Panels are shipped fully assembled.

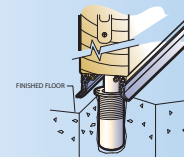
VERTICAL SECTIONS



GT1 Single



GT2 Paired



Footbolt engages in floor receptacle to ensure panel-to-panel alignment and stability.

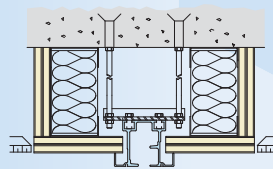
Note: Metric dimensions are in []

Track Systems

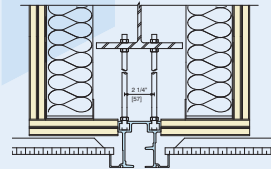
A QUALITY TRACK SYSTEM ASSURES YOUR PARTITIONS WILL MOVE EASILY FOR YEARS TO COME AND ENHANCE FAST PANEL SET-UP AND TAKE-DOWN.

All Hufcor tracks are rigorously tested for a minimum of 100 miles (approx. 10 years) of use. Job requirements vary, which is why Hufcor offers a selection of tracks to meet your needs. Our patented designs are the most imitated in the industry.

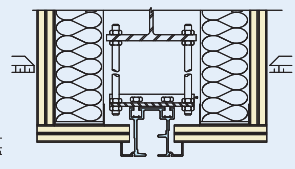
SOME TYPICAL SUSPENSIONS:



From Concrete Deck



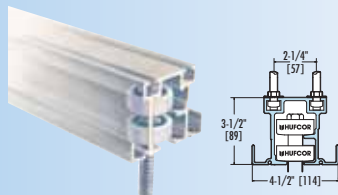
Directly from Steel Beam



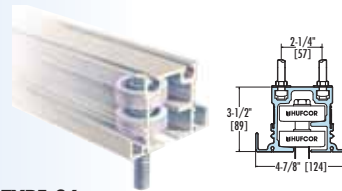
From Suspension below Steel Beam

ALUMINUM TRACK SYSTEMS

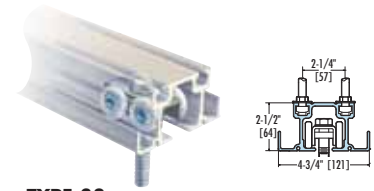
Our aluminum tracks are of clear anodized extruded architectural grade 6063-T6 alloy. Among aluminum's benefits are quiet operation, consistent shape for end-to-end alignment, unitized design for incorporating header panels and alignment pins, corrosion resistance, and we anodize it for a smooth, hard running surface needed for proper carrier movement. A selection of tracks is available to accommodate the weight of the model selected. The tracks have been load tested a minimum of 100 miles [161] (approximately 10 years of use).



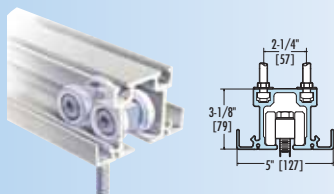
**TYPE 26
OMNI-DIRECTIONAL**
Weights to 500 Lbs. per panel



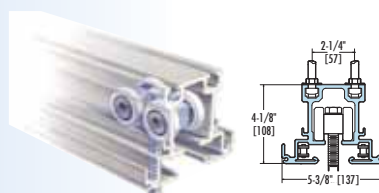
**TYPE 36
OMNI-DIRECTIONAL**
Weights to 1000 Lbs. per panel



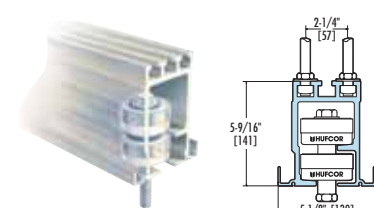
**TYPE 38
PAIRS & MANUAL TRAINS**
Weights to 400 Lbs. per panel



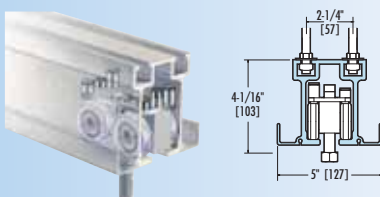
**TYPE 40
PAIRS & MANUAL TRAINS**
Weights to 900 Lbs. per panel



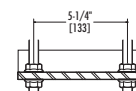
**TYPE 42E
ELECTRIC TRAINS**
Weights to 900 Lbs. per panel



**TYPE 57
OMNI-DIRECTIONAL**
Weights to 1500 Lbs. per panel



**TYPE 28
CURVE & DIVERT TRACK FOR
INDIVIDUAL PANELS**
Weights to 1200 Lbs. per panel

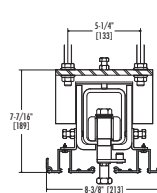


OPTIONAL SUSPENSION BRACKET
Optional suspension bracket for 5-1/4" [133] spacing. Available on all aluminum tracks.

STEEL TRACK SYSTEMS

Hufcor Steel Track is used when the partition height or weight limit exceeds that recommended for the aluminum system.

Note: Metric dimensions are in []



**TYPE 11
OMNI-DIRECTIONAL, ELECTRICAL
& PAIRED PANELS**
Weights to 3000 Lbs. per panel

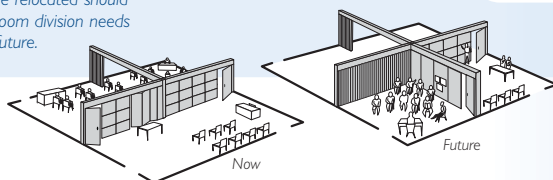
FOR MORE INFORMATION OR TO CREATE YOUR OWN PRELIMINARY DRAWINGS VISIT www.hufcor.com

Unispan®

SELF-SUPPORT SYSTEM



Unispan may be relocated should your space or room division needs change in the future.



Hufcor's Unispan® is an independent support system

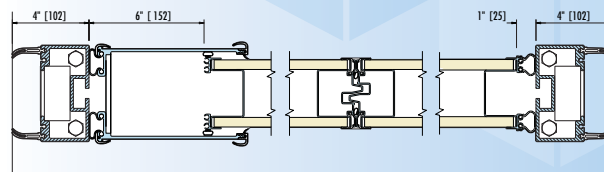
used with Hufcor operable or accordion partitions for quick, easy room division. It was developed to enable facilities to install partitions in buildings with inadequate overhead structure to support the weight of partitions. Unispan consists of a horizontal truss and two 2-1/2" x 5" [63.5 x 127] aluminum columns that support a movable partition independent of the building. The columns are connected to floor plates that distribute the load of the system at the floor. Bracing is needed for lateral stability only. The floor supports the weight of the system and must support a maximum of 360 psi at each post. The system can be moved to another location to accommodate future needs.

Unispan is available in widths up to 39'9" [12.2]. The height is limited by the panel weight. Operable panels can weigh no more than 400 lbs. [181 kg] each.

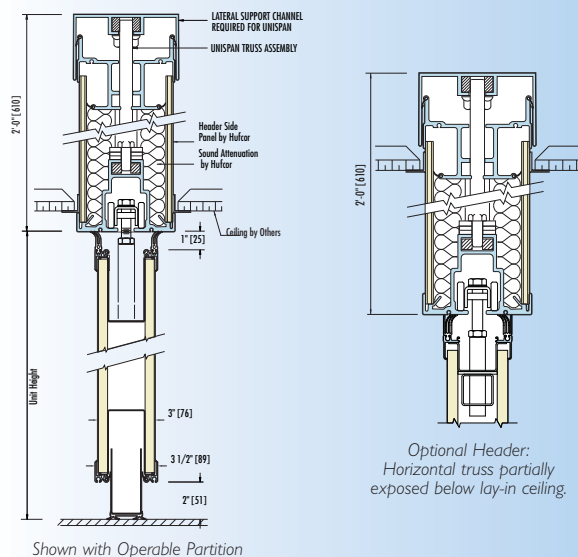
Unispan Features:

- Pre-engineered structural support designed specifically for the operable wall
- Zone 4 seismic ratings
- Reduces costs compared to traditional pre-punched I-beam steel structure
- Reduces costs of installation, especially in multi-story commercial spaces, since the system may be manufactured in sections that fit into most elevators
- Track system can integrate with ceilings, requiring less time for ceiling installers; the bottom cord of the truss system is the partition's track
- Built-in headers form a baffle above the partition, eliminating the need for another sub to install a plenum barrier

UNISPAN HORIZONTAL SECTION



UNISPAN VERTICAL SECTIONS



Visit our website at www.hufcor.com for more photos or to create your own shop drawings and specifications for preliminary job information. Specifications are also available in our Architectural Product Manual.

Note: Metric dimensions are in []

Pocket Doors PARTITION STORAGE



The finishing touch to your installation,

pocket doors cover the opening of the partition storage area. The doors may be factory-finished to match the partitions or field-finished to match the perimeter walls.



POCKET DOOR SPECIFICATIONS

Construction

Pocket Door panels are a nominal 3" [76] thick and similar in construction to the panels used in the opening. The welded steel frame is 16 ga. painted steel with aluminum vertical edge and face protection. (Optional for doors with steel faces only: no protective vertical face trim.)

Seals

The horizontal top and bottom seals are of multi-ply vinyl sweep-strips. When the pocket doors are in the closed position, the seals contact an aluminum head member which extends across the pocket from the track to the pocket walls. The pocket door is secured in the closed position by an expanding internal mechanism located approximately 46" [1168] from the floor in the face of the door. The top mechanism extends into the horizontal header. A jamb plate is attached to the floor and captures the bottom mechanism.

Finishes

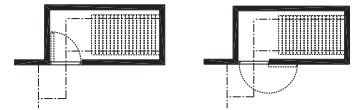
The exposed metal trim and jambs are powder coated Lamb's Wool, Brown or Gray. The metal trim may be custom powder coated for an optional upcharge. The aluminum header is clear anodized; optional custom anodizing is available.

The face finish is factory applied vinyl. Carpet or fabric from Hufcor's standard color selectors may be ordered for an upcharge. Custom finishes are available but require factory approval for manufacturing compatibility. The doors may also be unfinished for on-site field finishing to precisely match the room décor.

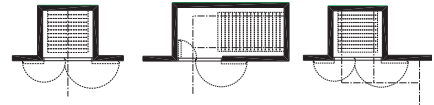
Note: Metric dimensions are in []

Shown are the most common configurations; however, others may be customized to your particular project.

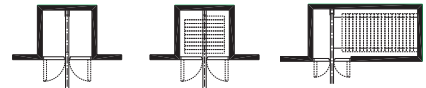
TYPE 1 POCKET DOOR



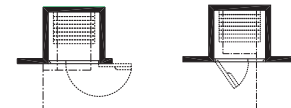
TYPE 2 POCKET DOOR



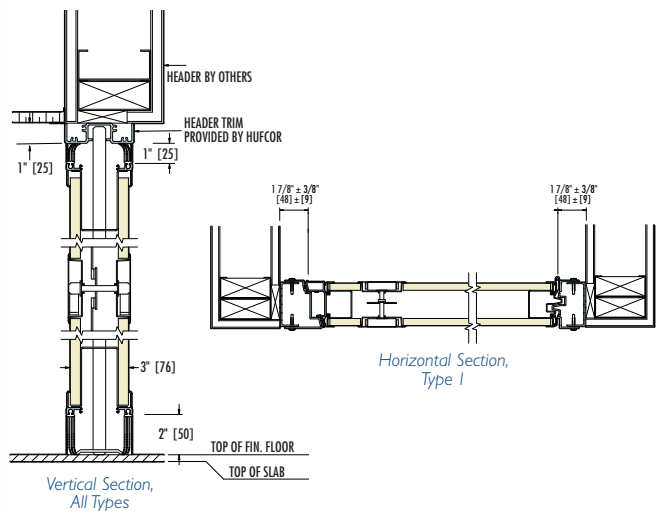
TYPE 3 POCKET DOOR



TYPE 4 POCKET DOOR

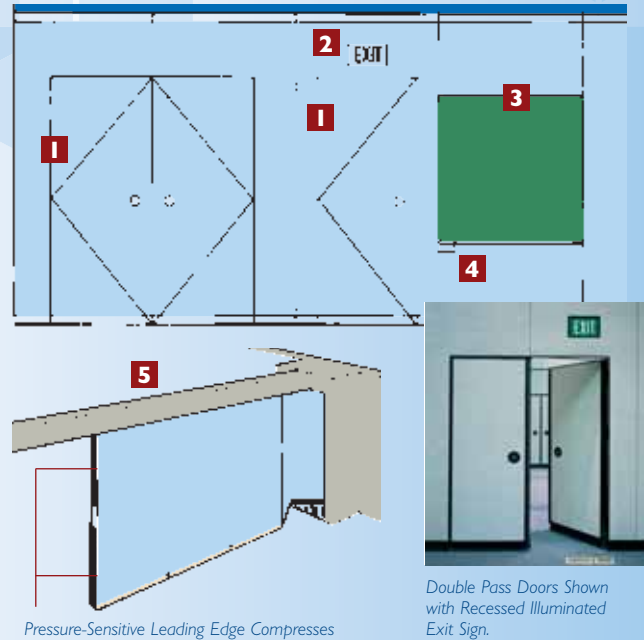


POCKET DOOR SECTIONS



Options FOR OPERABLE PARTITIONS

- 1. ADA Compliant Pass Door** – Available in single or double doors, Hufcor pass doors comply with ADA requirements and are of the same construction and finish as the panels. Options include automatic door closers, locks and prep for windows. No threshold required.
- 2. Exit Signs** – Exit signs are available for use on pass doors. They may be surface mounted or inset. Choose either green or red with white letters.
- 3. Work Surfaces** – Chalkboard, dry marker board, tackboards. Hufcor work surfaces are inset and include a full-width pen or chalk rail. The chalk and dry marker boards resist damage, abrasion, scratching and color fading, and wipe clean with a dry cloth or eraser.
- 4. Eraser Pocket** – This handy inset pocket holds a standard chalkboard eraser or other work surface accessories.
- 5. HufGard™ Safety System** – For electric partitions. Stops partition movement if people or objects are in the path of the partition.



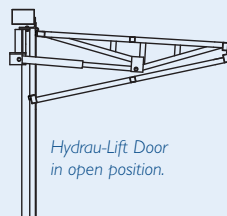
Hydrau-Lift Bi-Fold VERTICAL LIFT FOLDING DOORS

Bring the outdoors in with the touch of a button

and Hufcor's Hydrau-Lift bi-fold door. With this easy-to-operate system, you can quickly and safely open your restaurant or bar to the pool area, create sky boxes, or just have a large, clear opening when needed. The Hydrau-Lift bi-fold door folds vertically up and outward when retracted, leaving a clear opening and minimizing the amount of headroom needed inside the building. There are no unsightly cables or straps across the inside of the door. The lift mechanism is mounted at the edges of the upper door section for safe, fast operation and its compact motor unit may be placed wherever space is available for easy access.

Warranty

The frame, hydraulic drive mechanisms and controls are guaranteed for one year against defects in material and workmanship. Cladding by others is not covered.



Hydrau-Lift Bi-Fold Features:

- Structural steel tube frame
- Primed with a rust-resistant red oxide paint – ready for field finishing
- Patented hydraulic lift system
- No floor track required
- Motor may be mounted wherever convenient
- Maximum opening height to 16' [4.9]; widths to 18' [5.5] based on cladding/finish selected. (Contact your Hufcor Distributor if your opening exceeds these sizes.)
- Minimum opening 8' x 8' [2.4 x 2.4]. (Contact your Hufcor Distributor if your opening exceeds these sizes.)
- Accommodates extensive cladding options that match or enhance the building exterior

Note: Metric dimensions are in []

Accordion Doors

FOLDING PARTITIONS

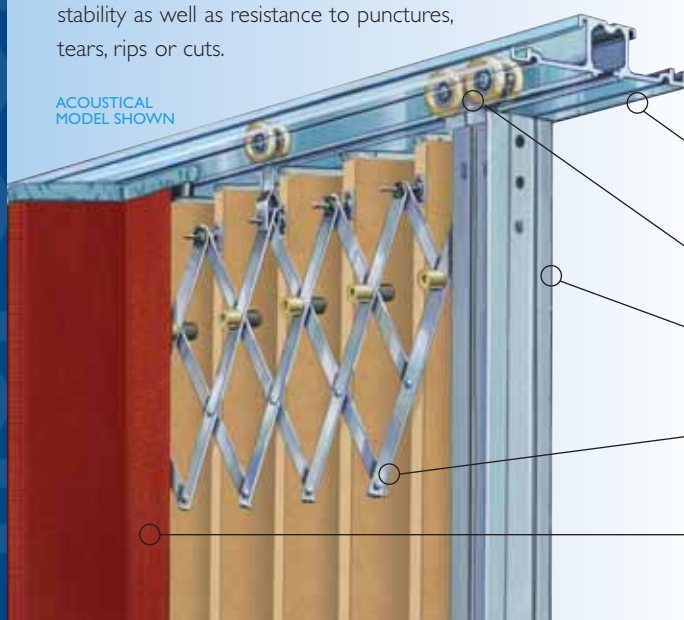


The industry's most attractive, durable accordion door. Accordion doors are the fastest, easiest way to divide space. You simply pull the door across the opening and latch in position. Accordions are a great choice when you need to divide your space frequently.

Hufcor accordion partitions are available in a selection of models: non-acoustically rated models 1500 and 2000; and acoustically rated models 3100, 3500, 3900, 4100 and 4500. The model number also references the acoustical rating (example: model 3100 has a Sound Transmission Class (STC) rating of 31, model 3500 is rated STC 35, etc.).

All Hufcor accordion doors have an internal steel pantograph for smooth, even extension whether the door goes wall-to-wall, through intersections, or around curves. Two semi-rigid, laminated covers are attached to the pantograph. The cover design provides strength and stability as well as resistance to punctures, tears, rips or cuts.

ACOUSTICAL
MODEL SHOWN



HUFCOR ACCORDION DOORS ARE AVAILABLE IN SIZES UP TO 17'0" [5.2M] IN HEIGHT BY 40'0" [12.1M] WIDE. WIDER OPENINGS MAY BE FILLED WITH MULTIPLE DOORS THAT ARE ATTACHED WITH SPECIAL POSTS.

ACCORDION Stack Sizes & Weights

Model	STC ¹ Rating	Lbs./Sq.Ft. [Kg./Sq.M]	Stack Dimensions ²
1500	15 (est.)	1.3 [6.3]	1.4"/ft. + 2" [117 + 51]
2000	20 (est.)	1.3 [6.3]	1.4"/ft. + 2" [117 + 51]
3100	31	2.7 [13.2]	1.9"/ft. + 3" [158 + 76]
3500	35	3.0 [14.6]	1.9"/ft. + 3" [158 + 76]
3900	39	3.7 [18.1]	1.9"/ft. + 3" [158 + 76]
4100	41	4.3 [21]	1.9"/ft. + 3" [158 + 76]
4500	45	4.3 [21]	1.9"/ft. + 3" [158 + 76]

¹ Sound Transmission Class.

² Add 30% to stack dimension for carpet. Carpet provides .55 NRC rating. Single Door Maximum Width 40'0" [12.19m]. Maximum Height 17'0" [5.18m]. For sizes in excess of these contact your Hufcor distributor.

Accordion Standard Features:

- A selection of heavy duty aluminum track systems are available to accommodate various ceiling conditions and provide sufficient support for each door.
- Steel ball bearing trolley with nylon tires supports the door every 18"-21" and provides smooth, quiet operation.
- Adjustable lead carrier allows proper alignment of the partition's leading edge for effective latching at all times and enables the door to adjust to out-of-plumb conditions.
- Precision-engineered steel internal pantograph provides years of smooth, easy folding action and allows the door to easily maneuver curves and switches.
- Wrinkle-free, impact resistant laminated covers provide a smooth, symmetrical appearance – not the drapery look provided by other manufacturers. If you decide to change your décor, or, if damage should occur, Hufcor can replace the cover or portions of a cover, rather than replace the entire door.

Note: Metric dimensions are in []

FOR MORE INFORMATION OR TO CREATE YOUR OWN PRELIMINARY DRAWINGS VISIT www.hufcor.com

ACCORDION SPECIFICATIONS

Construction

Hufcor's accordion doors consist of two laminated covers assembled to steel pantographs supported by aluminum covered steel channel posts at each end. Covers are of a semi-rigid laminated construction for wrinkle-free impact resistance.

Non-Acoustical Models 1500 & 2000: Covers have fiberboard strips and backing laminated within each fold. Model 2000 has sweepstrips top and bottom of one side.

Acoustical Models 3100, 3500, 3900, 4100 & 4500: Similar to the Model 1500, but with the addition of multi-ply sweepstrips top and bottom both sides and the lead post has the Magnaseal® magnetic contact latch. Steel strips are laminated within each fold for models 3500, 3900, 4100 and 4500. The higher the sound rating, the heavier the gauge of steel used.

Suspension System

Accordion doors are supported by nylon-tired steel ball bearing carriers. The track is clear anodized aluminum. Curves and switches are available to enable the doors to navigate curves and be used or stored in alternate or remote locations. Accordion doors may also be used in our Unispan® self-support system.

Finishes

The standard finish is factory applied vinyl from Hufcor's standard vinyl selector. Premium carpet, fabric or pre-approved custom finishes are an optional upgrade.

Acoustics

The acoustical performance of acoustical models shall have been tested at an independent laboratory in accordance with ASTM E90 test standards.

Operation

Standard partitions are manually operated. Electric operation is available.

ISO Registration

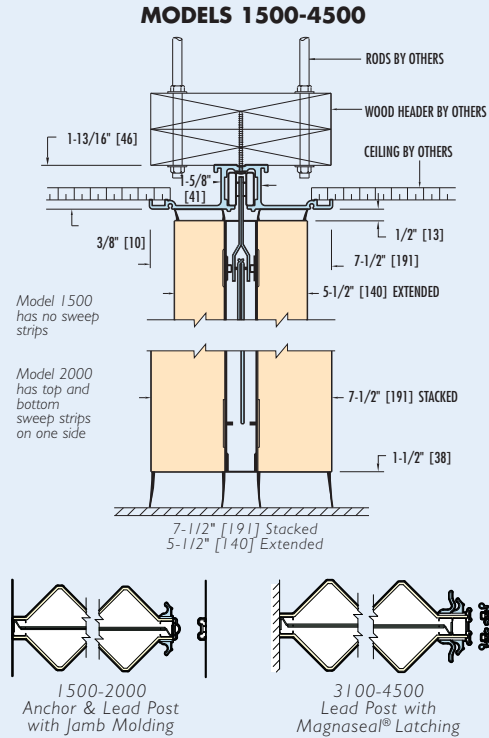
Hufcor U.S. manufacturing facilities' quality system is registered to the ISO 9001 standards.

Warranty

Partitions are guaranteed for two years and the pantographs, trolleys, and tracks are guaranteed for 10 years.

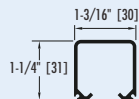
Details and editable specifications can be downloaded from Hufcor's website, www.hufcor.com. Complete specifications and details may also be found in our Architectural Product Manual.

ACCORDION SECTIONS

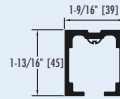


ACCORDION TRACK SYSTEMS

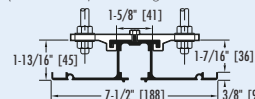
TYPE 50
Heavy-Duty Extruded Aluminum,
Recessed or Exposed



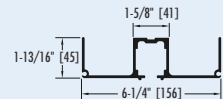
TYPE 71
Heavy-Duty Extruded
Aluminum, Recessed Only



TYPE 15
Heavy-Duty Extruded Aluminum with Built-in "Ceiling Saver"
May be direct attached or suspended from hanger rods
(shown with optional hanger bracket and rods)



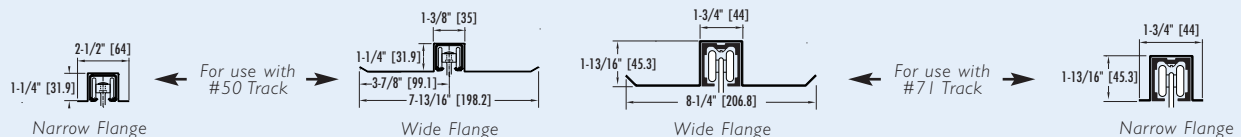
TYPE 18
Heavy-Duty Extruded Aluminum
with Built-in "Ceiling Saver"



Track Types	Type 50	Type 71	Type 15	Type 18
Models 1500 -2000	Widths to 20'0" or heights to 10'0" [6.09 x 3.04]**	Optional All Sizes	Optional All Sizes	Optional All Sizes
Models 3100, 3500, 3900	Widths to 20'0" or heights to 10'0" [6.09 x 3.04]**	Optional All Sizes	Optional All Sizes	Optional All Sizes
Models 4100, 4500	Not Available	Optional All Sizes	Optional All Sizes	Optional All Sizes

**If size exceeds either dimension shown, use alternate track.

Channel: Optional, but recommended for recessed installations. Channel provides smooth, straight ceiling lines; aids track installations. Flanges on both sides protect ceiling. Primed off-white.

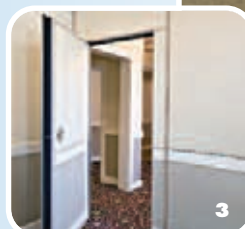


Note: Metric dimensions are in []

Finishes

The right finish can add beauty and elegance to your Hufcor partitions.

Hufcor's standard vinyl is included in the price of our operable partitions and includes several patterns and colors. But you aren't limited to only vinyl. For an additional cost, panels may also be finished in other materials, including non-standard vinyl, fabric, carpet, high pressure laminate, windows, and wood veneer (all subject to prior factory pre-approval). To match specific design elements such as wainscot, chair rails, etc., the partition may be ordered unfinished for on-site decoration. Ask your Hufcor Distributor about the possibilities. (Note: Hufcor's warranty cannot cover non-standard finishes.)



- 1** The Hufcor panels in the Hilton Inn, Austria, are finished with custom fabric and wood trim. They look just like the permanent walls when set in place.
- 2** Wood veneer and inset mirrors add an elegant look to this Asian convention center.
- 3** An inset chair rail matches those on the permanent wall.
- 4** Beautiful wood veneer was added to the operable partition in this upscale restaurant.
- 5** The architect chose stainless steel faces for the Hufcor partitions in this office. The light reflects from the nearby windows.

Choose Hufcor... innovation

YOU GET MORE WITH HUFCOR



World Leader in Flexible Space Management™

WORLDWIDE HEADQUARTERS

PO Box 591 / 2101 Kennedy Road, Janesville, WI 53547
Toll-Free: 800-542-2371, ext. 214 Telephone: 608-756-1241
Fax: 608-758-8253 E-mail: info@hufcor.com
www.hufcor.com

The Hufcor Commitment to Green Manufacturing, Sustainability and LEED™.

Hufcor is committed to being an industry leader when it comes to protecting the environment by reducing pollutants and minimizing our environmental impact on air, water and land. For over a decade Hufcor has utilized a "Green" approach to manufacturing and energy consumption and has increased the percentage of materials that we recycle, reuse, repair, restock or return for salvage. Today, the Hufcor commitment and progress toward Green manufacturing is greater than ever as we continue to develop standards that support various LEED™ (Leadership in Energy and Environmental Design) points to assist the achievement of LEED certification goals.



IT'S ALL IN THE BOOK

More details on all Hufcor products are available in the Architectural Product Manual. Call your local rep today to receive a complimentary copy.

see us at
Sweets.com

Hufcor has a program of continuous product improvement. As a result, some products may be modified from those represented in this catalog.

Hufcor Partition U.S. Patents:			
2,861,660	3,056,193	3,223,147	3,295,257
3,295,588	3,450,185	3,638,376	3,755,968
3,783,930	3,879,799	3,042,960	4,014,137
5,181,296	5,230,123	5,406,676	5,481,834
5,564,759	6,112,466	6,167,937	



The quality systems of Hufcor's U.S. manufacturing facilities are registered to the ISO 9001 standards.



*USGBC and related logo is a trademark owned by the U.S. Green Building Council and is used by permission.



Hufcor offers continuing education programs for AIA members. Contact your Hufcor representative for details.